

# Making Land-based Aquaculture a Viable “Outport” Industry

Mining hidden gems, raising ugly  
ducklings & riding the white elephant

Michael Graham  
Local Prosperity 2015



People. Discovery. Innovation.



Harbour Authority of Lord's Cove



Fisheries and Oceans  
Canada

Pêches et Océans  
Canada



Town of Lord's  
Cove



Atlantic Canada  
Opportunities  
Agency

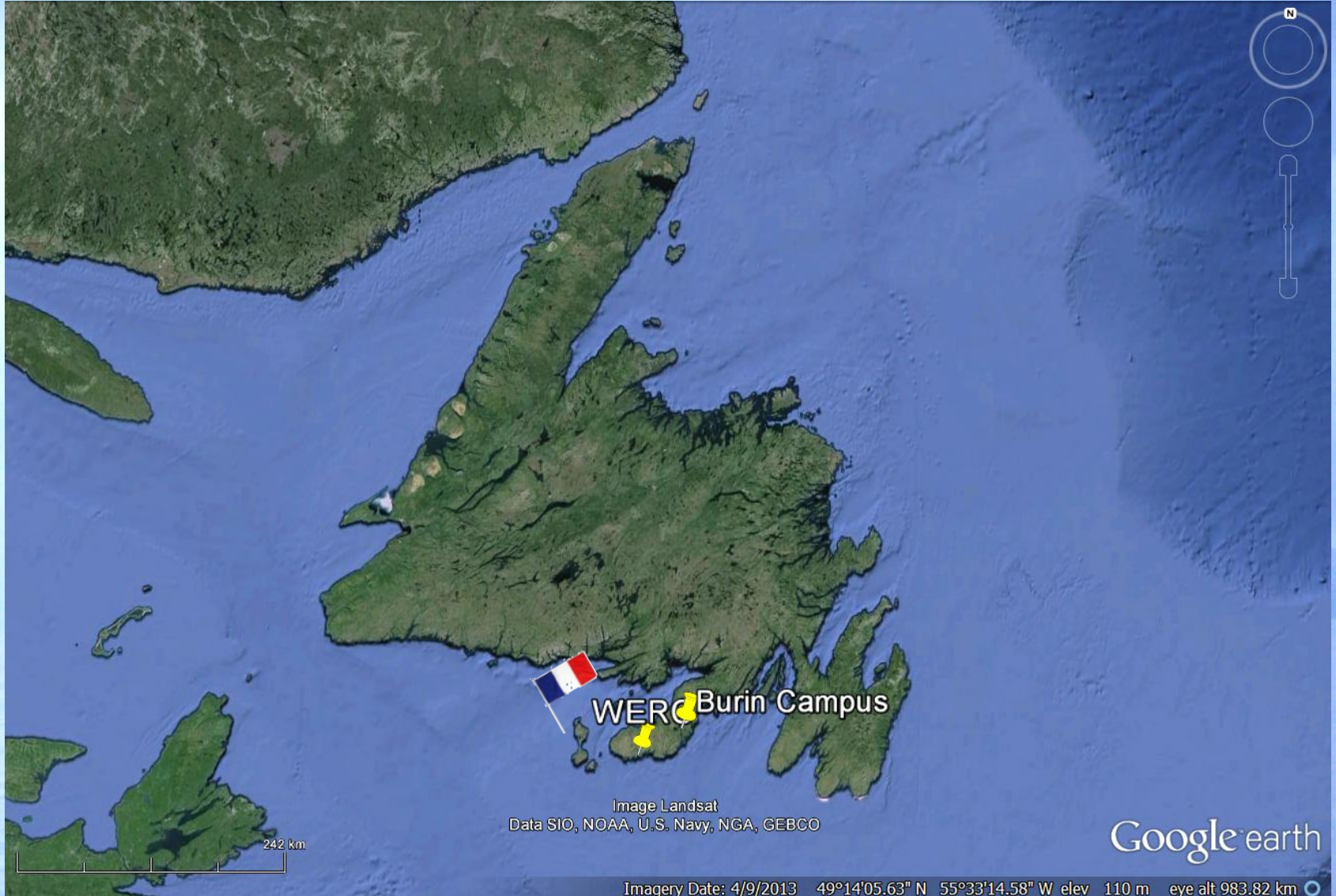
Agence de  
promotion économique  
du Canada atlantique



National Research  
Council Canada

Conseil national  
de recherches Canada

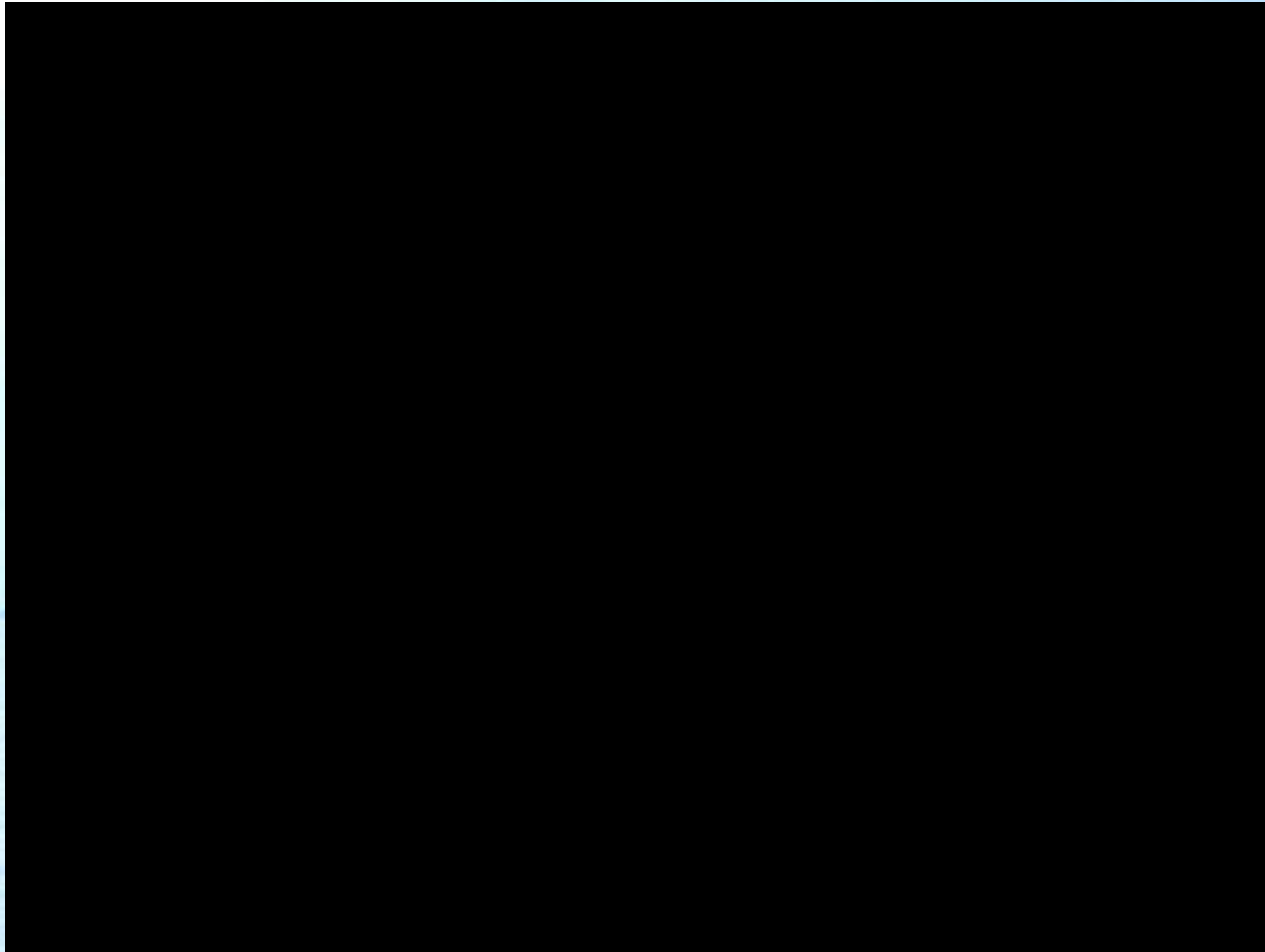
Department of  
Business, Tourism, Culture  
and Rural Development





# Setting the scene....

St. Bride's 1985



# Setting the scene....

Lord's Cove 2010









# Aquaculture an obvious answer.....

## But....

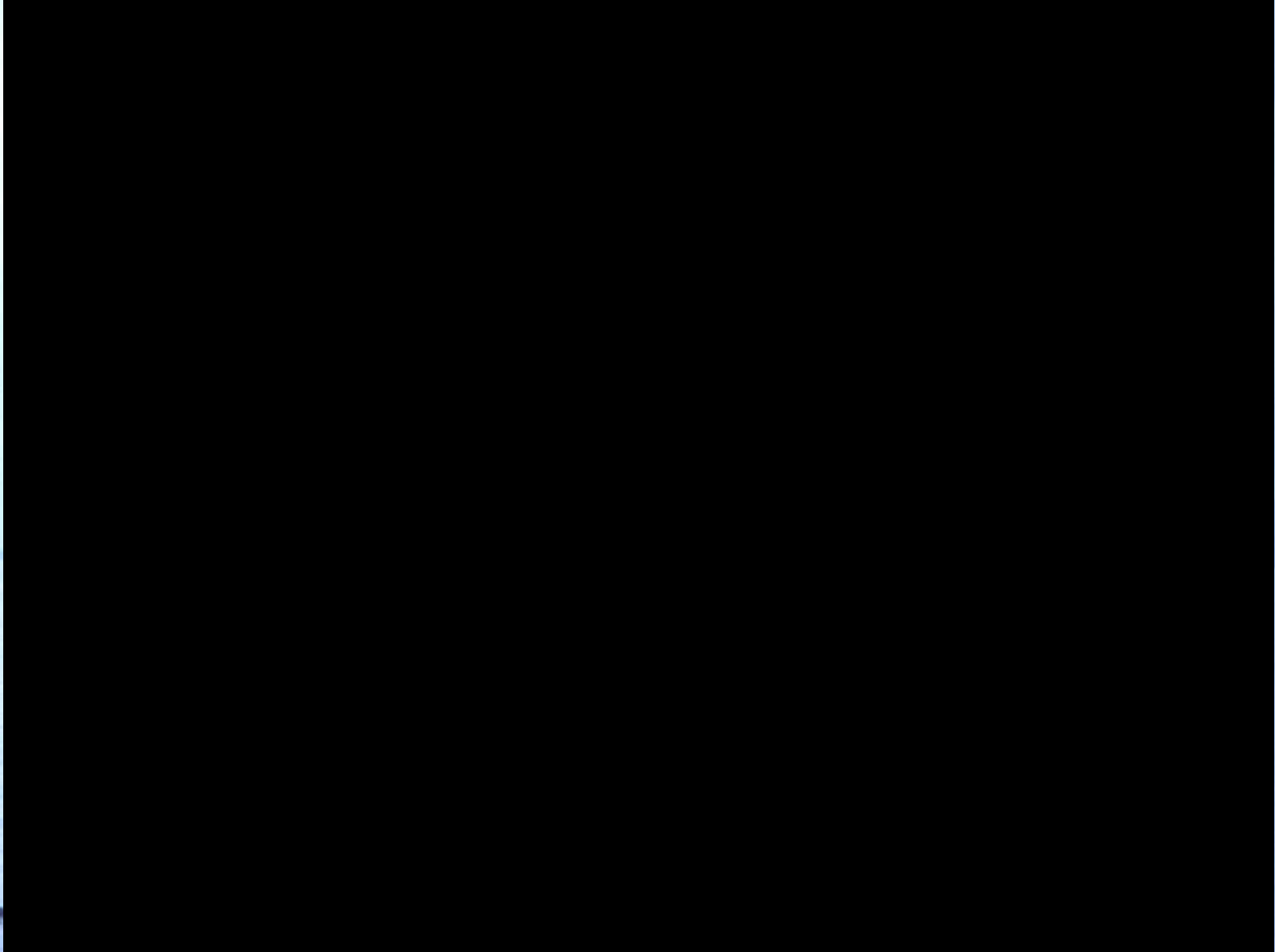
- Lack of sea sites (depth, waves etc.)
- Expensive pumping required for land –based
- Land based becomes point source of organic pollution
- Max production requires heat in winter

## So.....

- Go on land?
- Find inexpensive way to move water to shore – Waves?
- Find a way to turn poo into profit.....multi-trophic aquaculture?
- Anaerobic digestion (methane production from farm waste)????

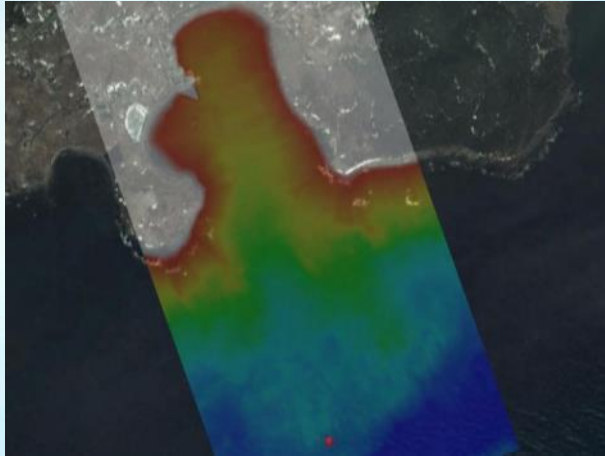
# Remember....

## It IS the North Atlantic....

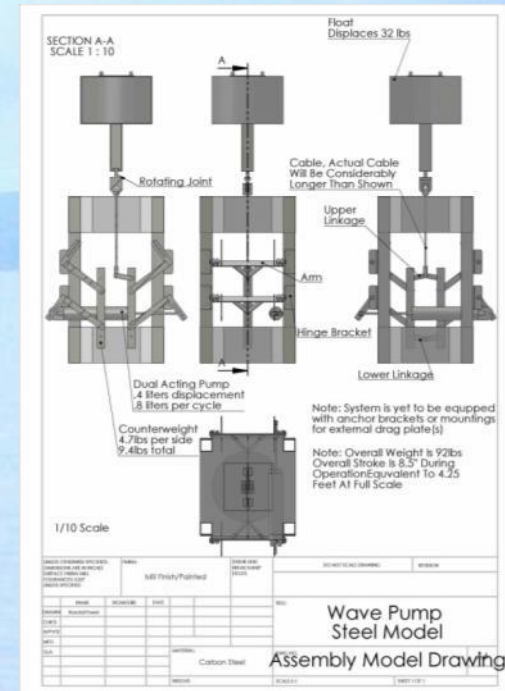
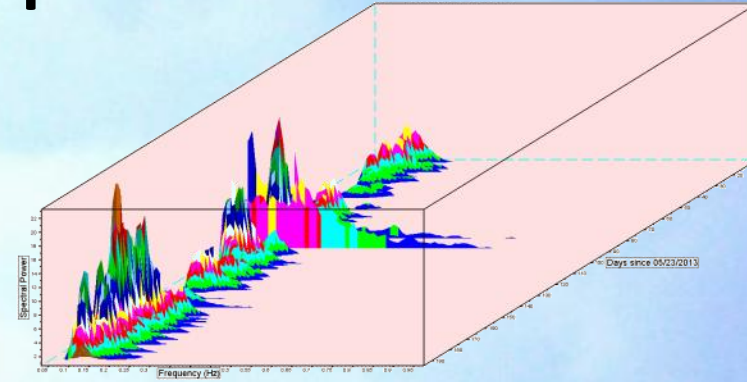




# Wave Pump

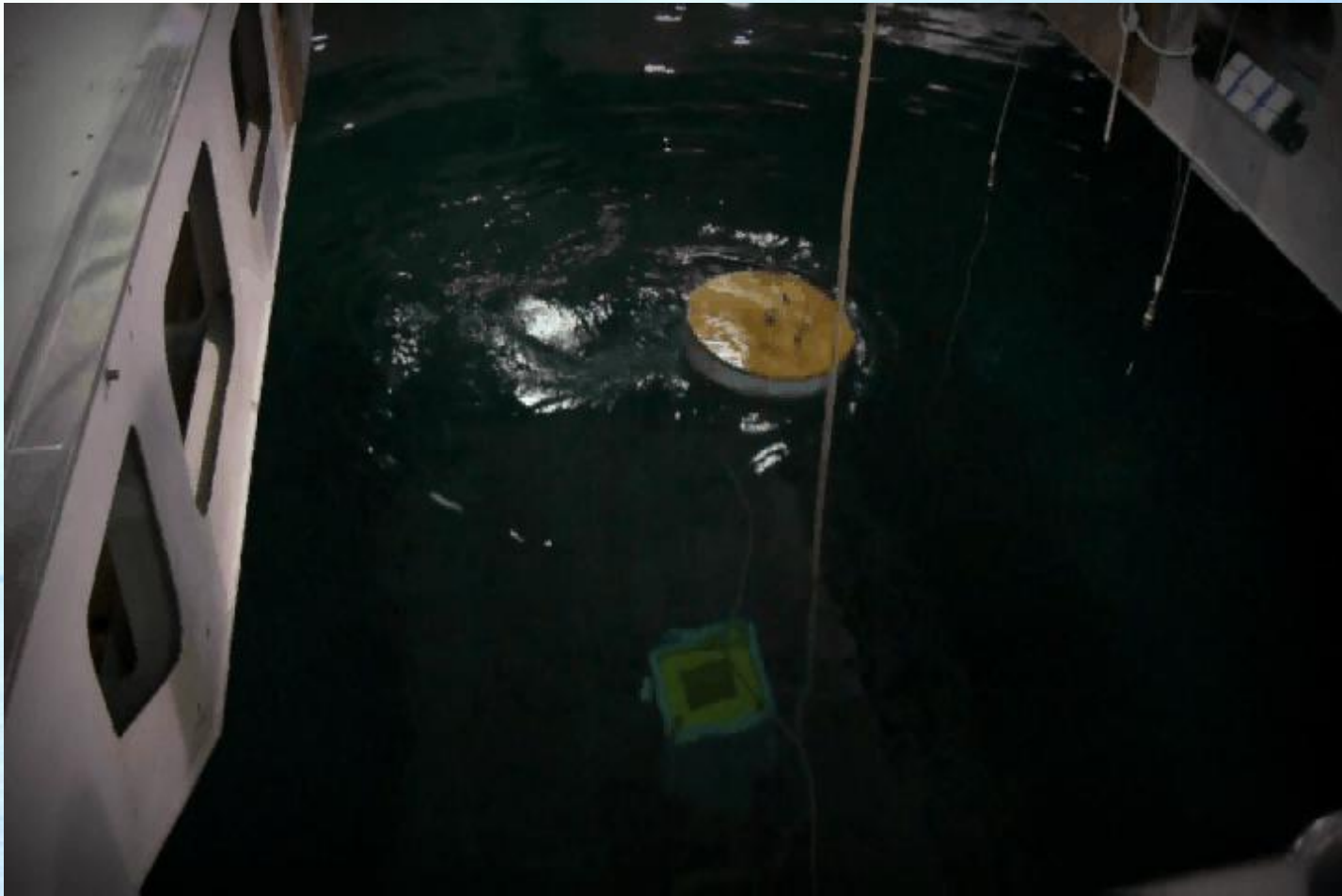


Wave Spectra - May-Nov 2013

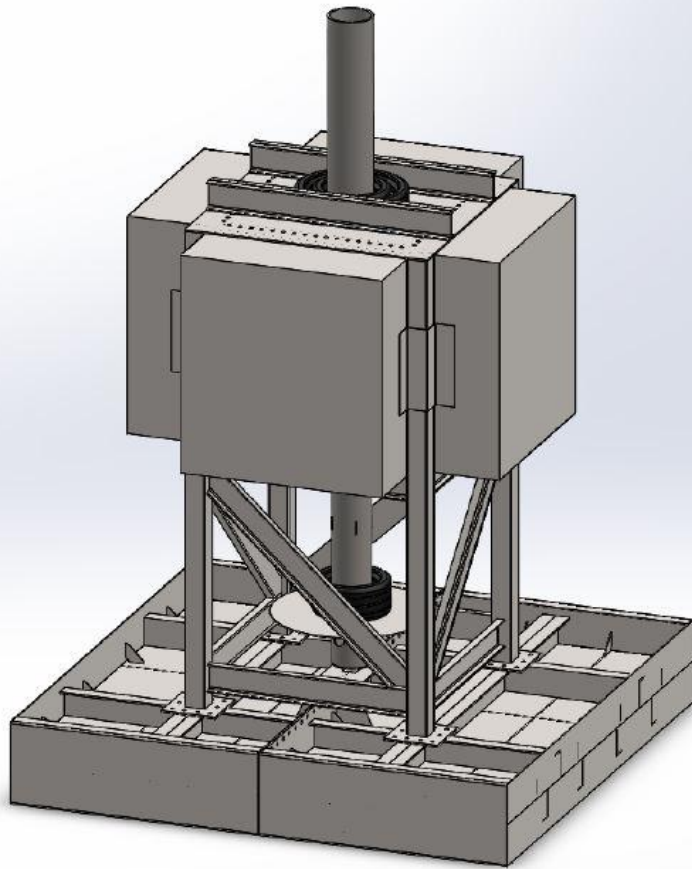




# The Pump



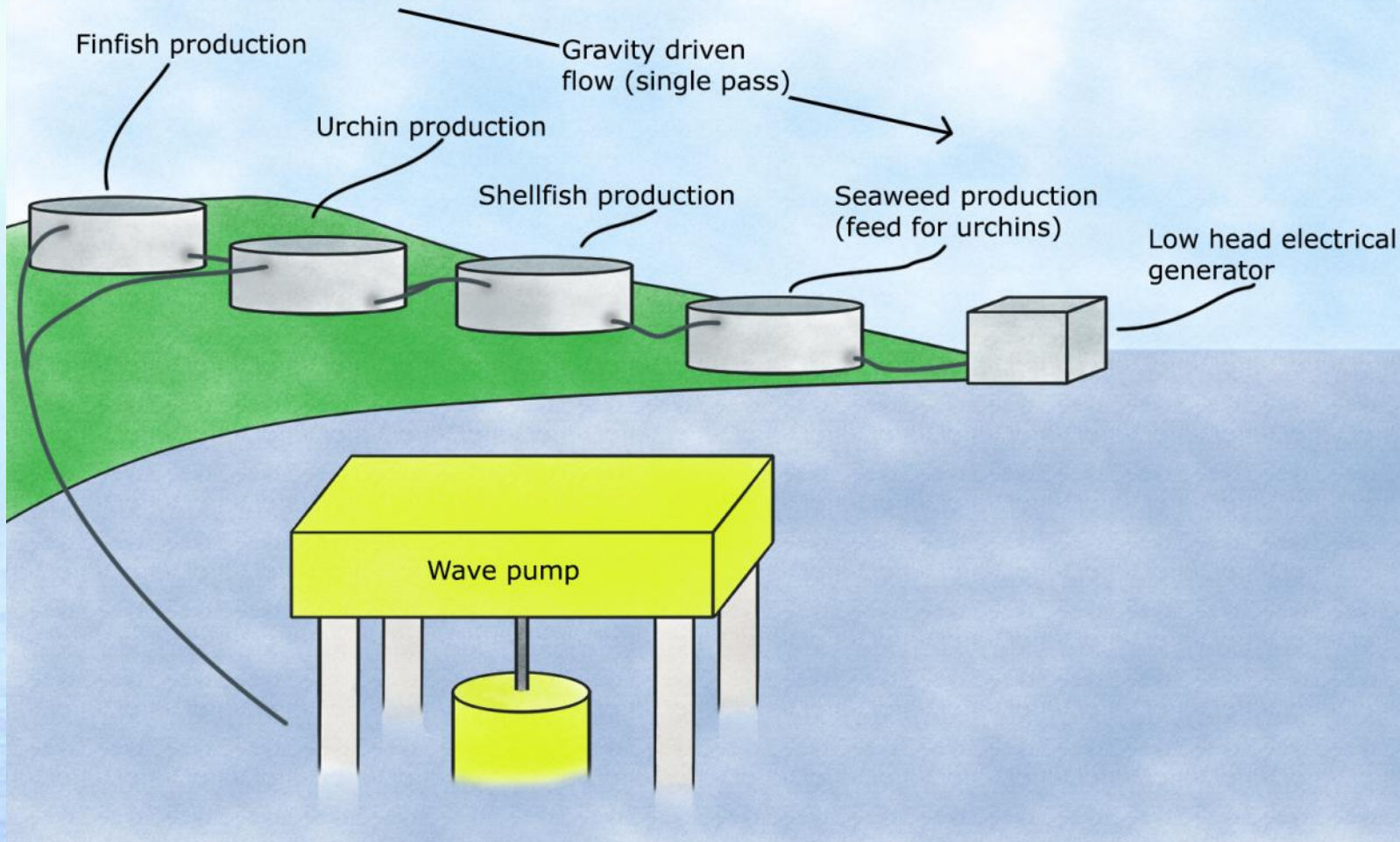
# The Pump



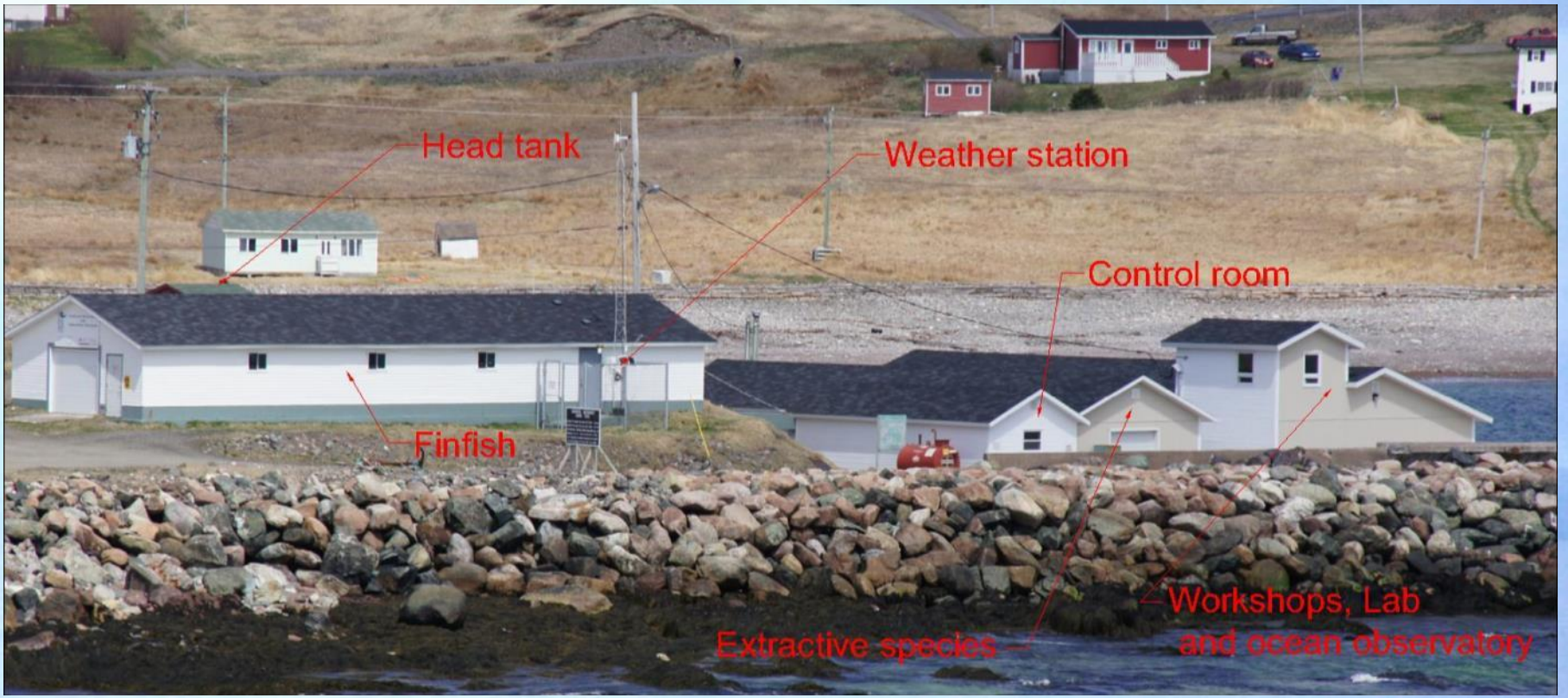


# The Farm

## Wave pump driven, cascaded land based IMTA

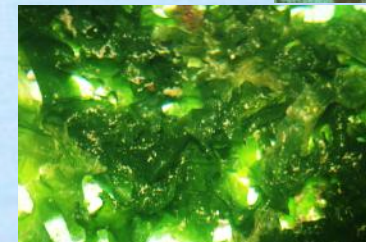
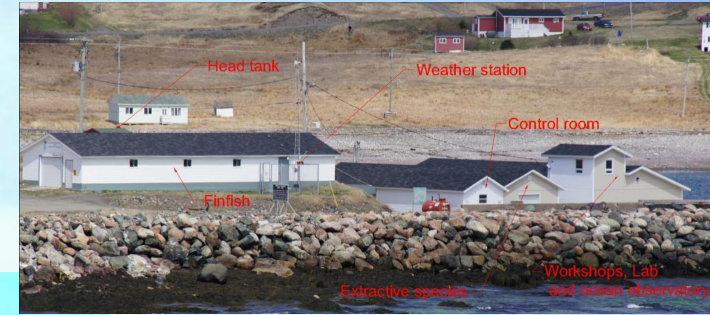
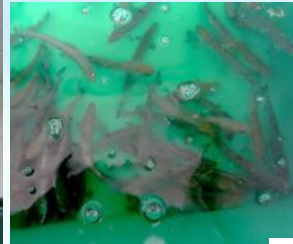








# The Farm



# So Far.....

- All organisms growing & healthy
  - Only finfish are “fed”
- Water Flow problems during storms (clogged filters)
- Ocean temperature extremes
  - Winter temperatures down to  $-1.5^{\circ}\text{C}$
  - Late August Temperatures up to  $20.5^{\circ}\text{C}$
- Abundance of nutrition for extractive organisms



# Spin-offs & economics

- Ocean observatory & engineering test centre
- Land-based aquaculture research facility
  - Maximize feed conversion
  - Energy efficiency
  - Commercialization of underutilized species
- Land-based IMTA:
  - Works biologically
  - Still research required to prove the economics

# A final word.....

*Always remember what an ugly duckling can become.....*

